



## BITS MOSAIC

$\frac{3}{4}$ " Penny Round  
1" x 1"  
 $\frac{3}{4}$ " Hexagon

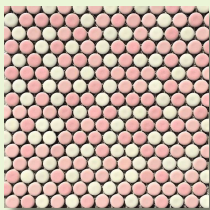
<https://cepactile.com/product/bits-mosaic/>

### PROFILE

Available from one collection - 20 different shades, in 3 different styles, Bits Mosaic are suitable for a multitude of applications from countertops to pool waterlines. Customizable patterns are also available to create a personal touch.

#### Note:

- Minimum order quantity is one box.
- Full box quantities only.
- General lead time is approx. 45 to 90 days.
- Random blends can be created by using up to three colors.



747-224-0600

[www.cepactile.com](http://www.cepactile.com)

[customercare@cepactile.com](mailto:customercare@cepactile.com)

*Where Excellence in Quality & Service Unite!*

## RECOMMENDED AREAS OF USE

With regard to the durability of the bisque and glaze, this material is suitable for:

- All vertical applications - residential and commercial
- All interior wall and countertop
- Fireplace surround, hearth and firebox
- Light commercial flooring applications
- All exterior wall applications including building facades, swimming pools, fountains and outdoor kitchens, including regions that experience extreme weather conditions, subject to the method of installation

## INSTALLATION AND MAINTENANCE

- Please refer to the TCNA handbook for installation method <http://www.tcnatile.com/>
- Always inspect material prior to installation, for color, shade, size, mounting and any other deciding factors as installed material cannot be accepted for return or credit. Use signifies acceptance.
- Please note that mesh/paper face mounted goods should never be placed directly on the wet saw for cutting. If cuts are required, pieces should be removed from the mesh/paper and cut individually to avoid the glue releasing from the mesh/paper.
- Material can be cleaned with any mild nonabrasive household cleaning product due to the chemical resistant nature of the glaze.

## TECHNICAL DATA

- Japanese Porcelain – fired at approx. 2300 degrees Fahrenheit
- Chemical Resistant
- Frost Proof – subject to method of installation
- Water absorbency
  - Bisque less than 1%
  - Glazed surface 0%
- TCNA – MOH's Scale Rating 7
- TCNA – DCOF Average Ratings: 0.20
- $\frac{3}{4}$ " Penny Rounds:
  - Paper face mounted only - 1 sheet = 0.97 sq. ft. / 29.1 sq. ft. per box
  - Sheet size: nominal 11.50" x 11.75"
  - Weight: 1.65 lbs. per sq. ft. / 50 lbs. per box
  - Thickness: 3/16"
- 1"x1":
  - Mesh mounted - 1 sheet = 0.97 sq. ft. / 24.25 sq. ft. per box
  - Sheet size: nominal 11.50" x 11.50"
  - Weight: 1.65 lbs. per sq. ft. / 42 lbs. per box
  - Thickness: 1/4"
- $\frac{3}{4}$ " Hexagon:
  - Mesh mounted - 1 sheet = 0.97 sq. ft. / 29.1 sq. ft. per box
  - Sheet size: nominal 11.25" x 11.50"
  - Weight: 1.85 lbs. per sq. ft. / 56 lbs. per box
  - Thickness: 3/16"
- Pre-consumer recycled content – 66.6%
- Variations of shade are inherent characteristics of all kiln fired products. To ensure satisfaction, please visually inspect all merchandise prior to installation, as use signifies acceptance.
- We will endeavor to resolve any issues that may arise with material purchased prior to installation.